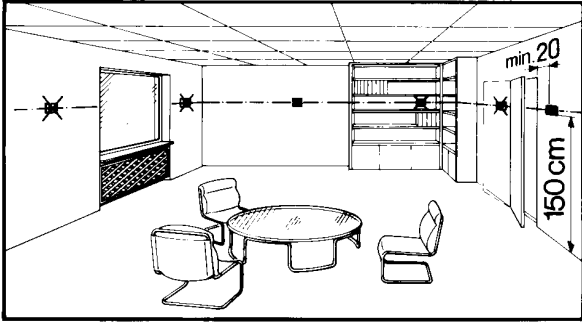


RDF310.2/MM RDD310/MM

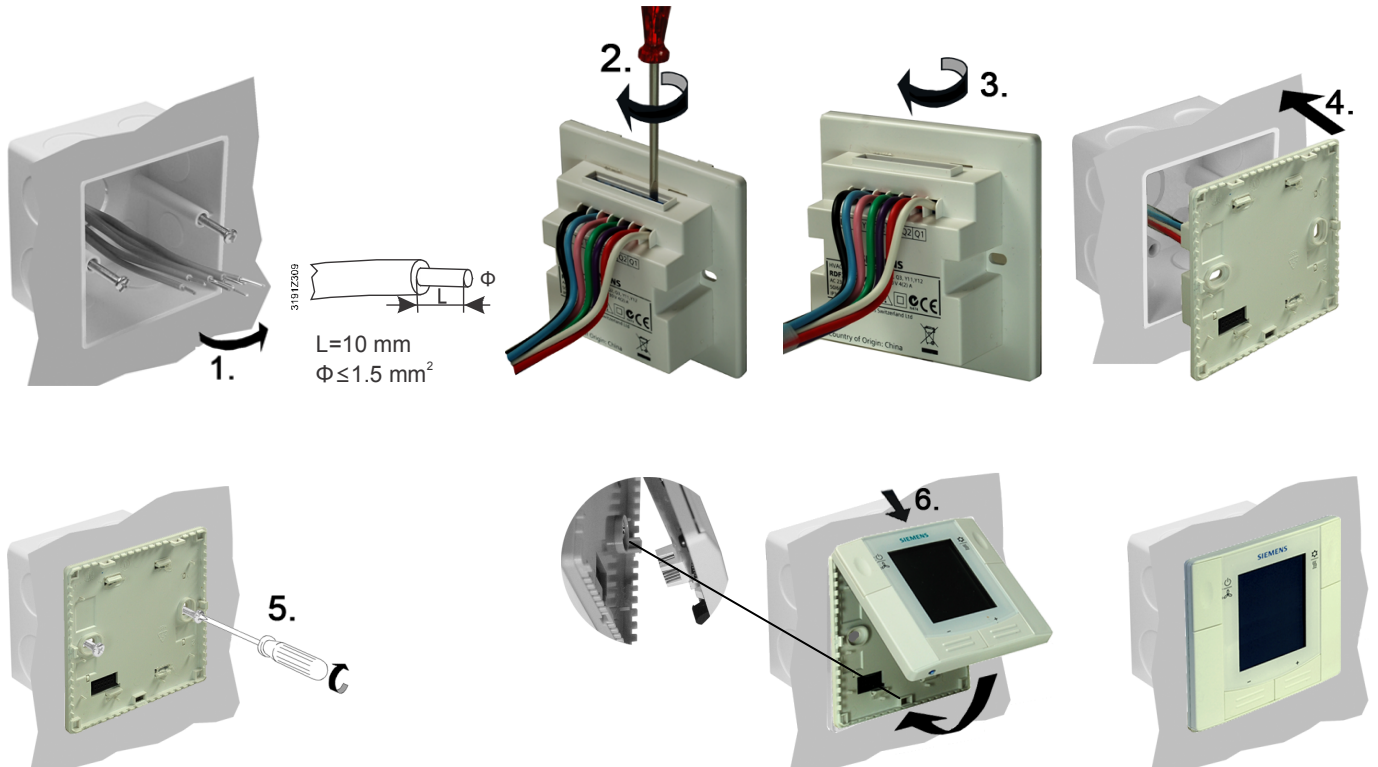
Mounting Location of Thermostat / 温控器安装位置



Preparation and Deliverables / 安装前准备



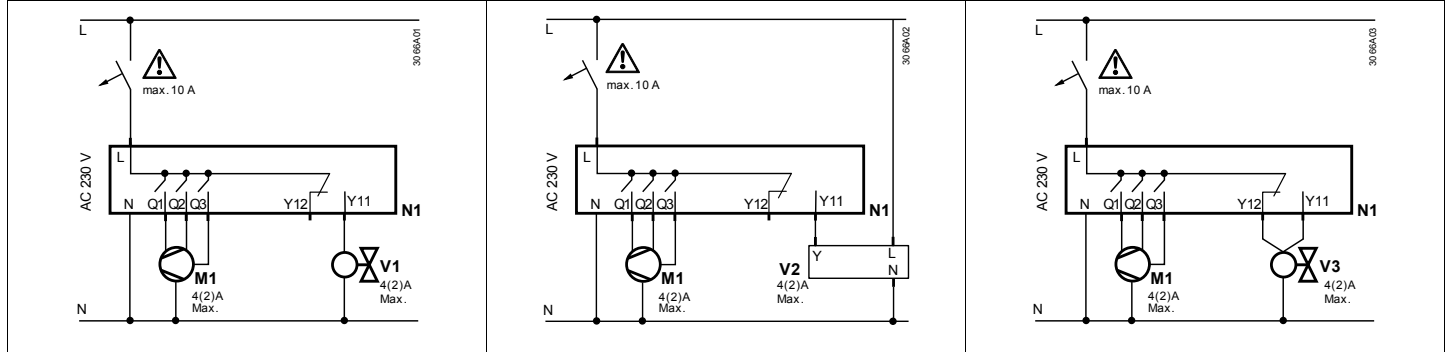
Flush-Mounting / 嵌入式安装



en	Tighten the screw to max. 30 Nm torque
zh	拧紧螺丝时的最大扭矩为 30 Nm

RDF310.2/MM

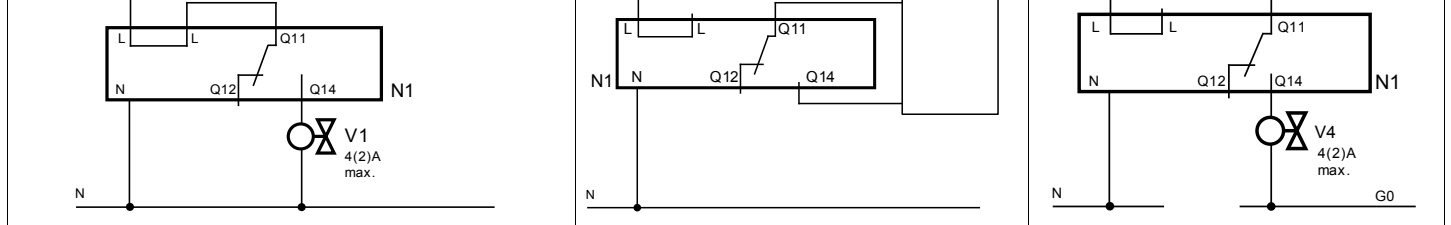
⚠	en Power supply is AC 230 V Y12 cannot be used as power supply of AC 230 V Do not connect Y12 to L/N from the mains or AC 230 V power supply Do not connect more than one fan coil unit to the thermostat	zh 电源电压为 AC 230 V Y12 不能用作 AC 230 V 电源 请勿将 Y12 接到主电源或 AC 230 V 电源的零线或火线上 请勿将温控器接到多个风机盘管上
---	------------------------------------------------------------------------------------------------------------------------------------------------------------------------------------------------------------------------------	-------------------------------------------------------------------------------------------------------------



	en	zh		en	zh
N1	RDF310.2/MM	RDF310.2/MM	L, N	Operating voltage AC 230 V	工作电压 AC 230 V
Y11	Control output "valve" or "compressor" AC 230 V (N.O.)	控制输出 "阀门" 或 "压缩机" AC 230 V (常开)	Y12	Control output "valve" AC 230 V (N.C.)	控制输出 "阀门" AC 230 V (常闭)
Q1	Output "low fan speed" AC 230 V (2 A inductive load)	控制输出 "低速风机" AC 230 V (2 A 电感负载)	Q2	Output "medium fan speed" AC 230 V (2 A inductive load)	控制输出 "中速风机" AC 230 V (2 A 电感负载)
Q3	Output "high fan speed" AC 230 V (2 A inductive load)	控制输出 "高速风机" AC 230 V (2 A 电感负载)	V2	Electromotoric actuator, e.g. SUA21/1	电动执行器, 如 SUA21/1
V1	Valve AC 230 V	阀门 AC 230 V	V3	SPDT zone valve	接受 SPDT 信号的区域阀
M1	3-speed fan	三速风机			

RDD310/MM

i	en Use a jumper to connect Q11 with L line zh 请使用跳线帽连接 Q11 和 L 端子	
---	------------------------------------------------------------------------------------	--



	en	zh		en	zh
N1	RDD310/MM	RDD310/MM	U1	Wall-hung boiler	壁挂锅炉
L, N	Operating voltage AC 230 V	工作电压 AC 230 V	G, G0	Operating voltage AC 24 V	工作电压 AC 24 V
V1	Valve AC 230 V	阀门 AC 230 V	Q11	SPDT Relay Input (Dry Contacts) AC 24...230 V	单刀双掷继电器输入 (干触点) AC 24...230 V
V4	Valve AC 24 V	阀门 AC 24 V	Q14	SPDT Relay Normal Open (NO) Output AC 24...230 V	单刀双掷继电器输出 (常开) AC 24...230 V
Q12	SPDT Relay Normal Close (NC) Output AC 24...230 V	单刀双掷继电器输出 (常闭) AC 24...230 V			

Dimensions / 尺寸

